

# ENHANCED ISOLATION PRECAUTIONS

Visitors Please Stop at  
Desk Before Entering

N95 respirator or  
PAPR to enter



Hand Hygiene  
to Enter and Exit



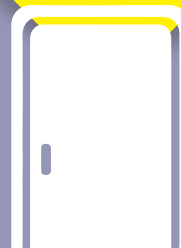
Gloves to  
Enter



Gown to  
Enter



Eye Protection  
Required



Door Closed  
at All Times



Remove Gown  
and Gloves Before  
Leaving Room