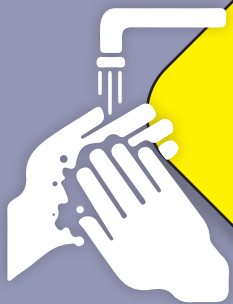


ROCHESTER REGIONAL HEALTH

ENHANCED ISOLATION PRECAUTIONS

**Visitors Please Stop at
Desk Before Entering**

Hand Hygiene
to Enter and Exit



N95 respirator or
PAPR to enter

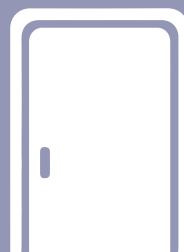


Gloves to
Enter

Gown to
Enter



Eye Protection
Required



Door Closed
at All Times



Remove Gown
and Gloves Before
Leaving Room